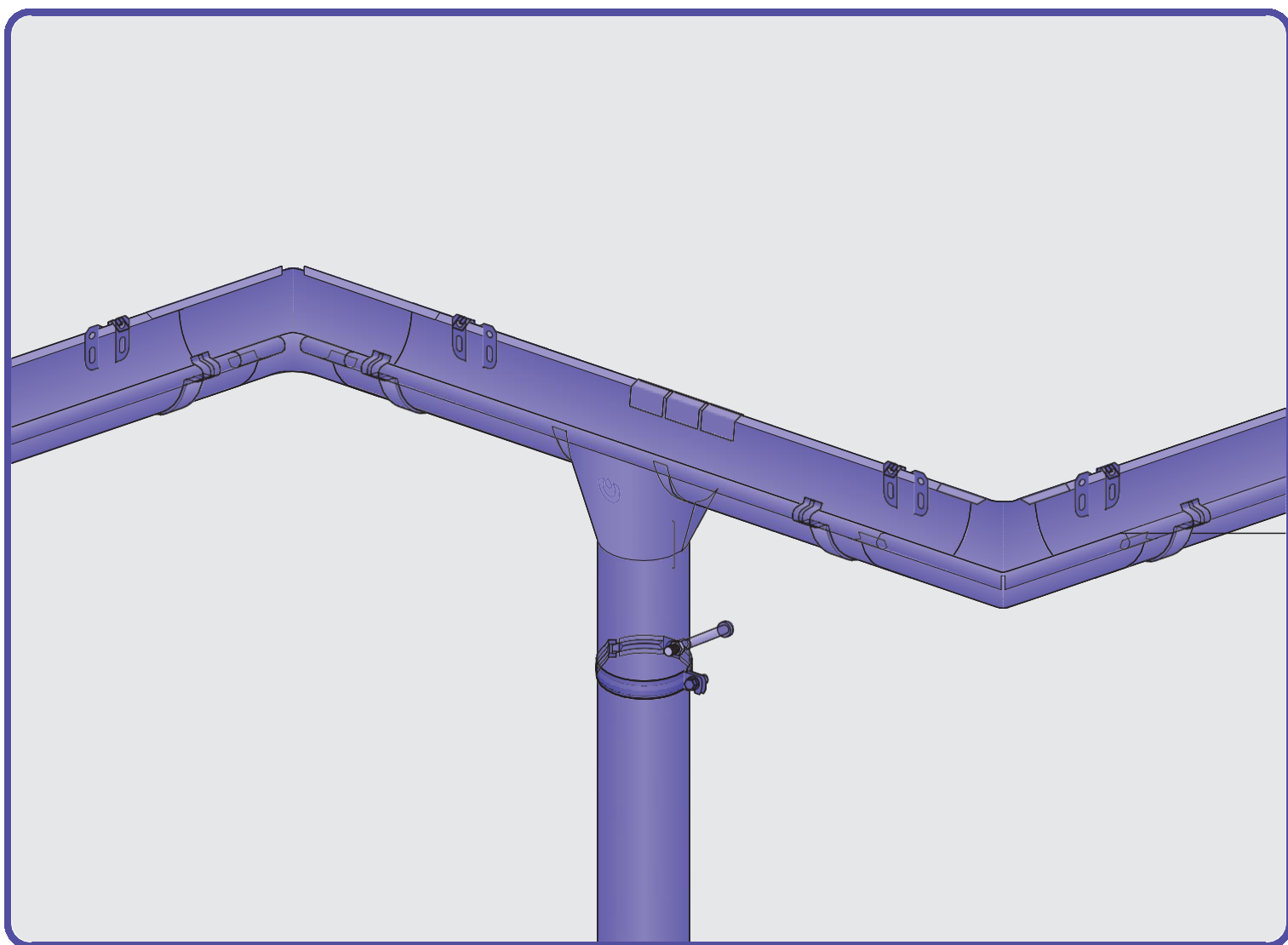
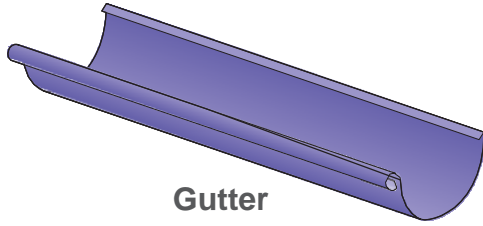


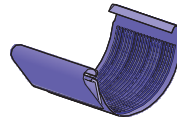
Installation manual, steel gutter system



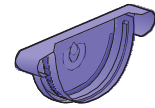
Description of the system components



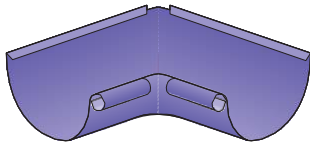
Gutter



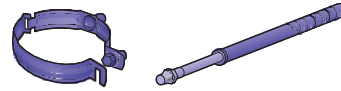
Gutter connector



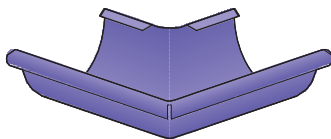
Universal bottom



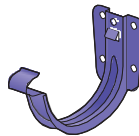
Inner corner



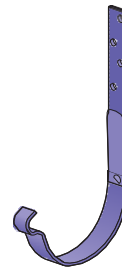
Pipe clamp



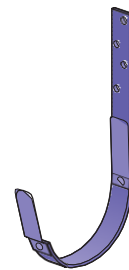
Outer corner



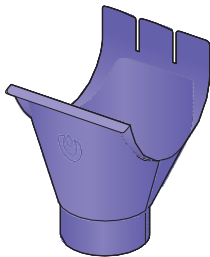
Gutter hook



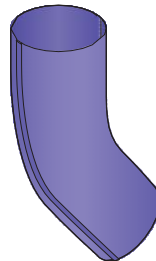
Rafter hook



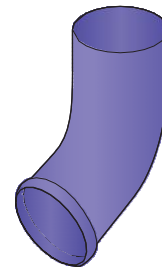
BB Rafter hook



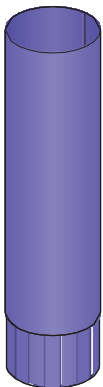
Funnel outlet



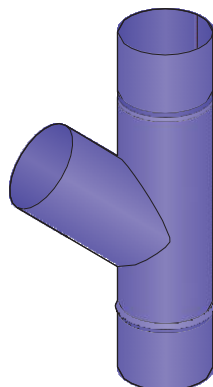
Elbow



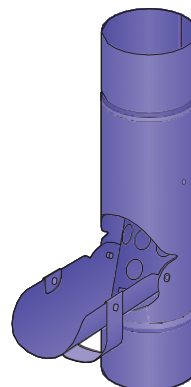
Screed



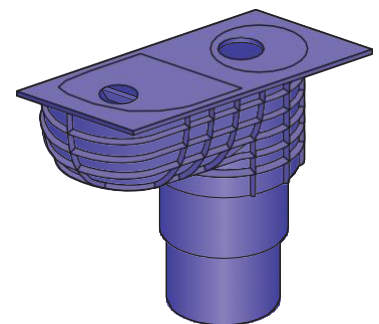
Pipe



Adjustable tee

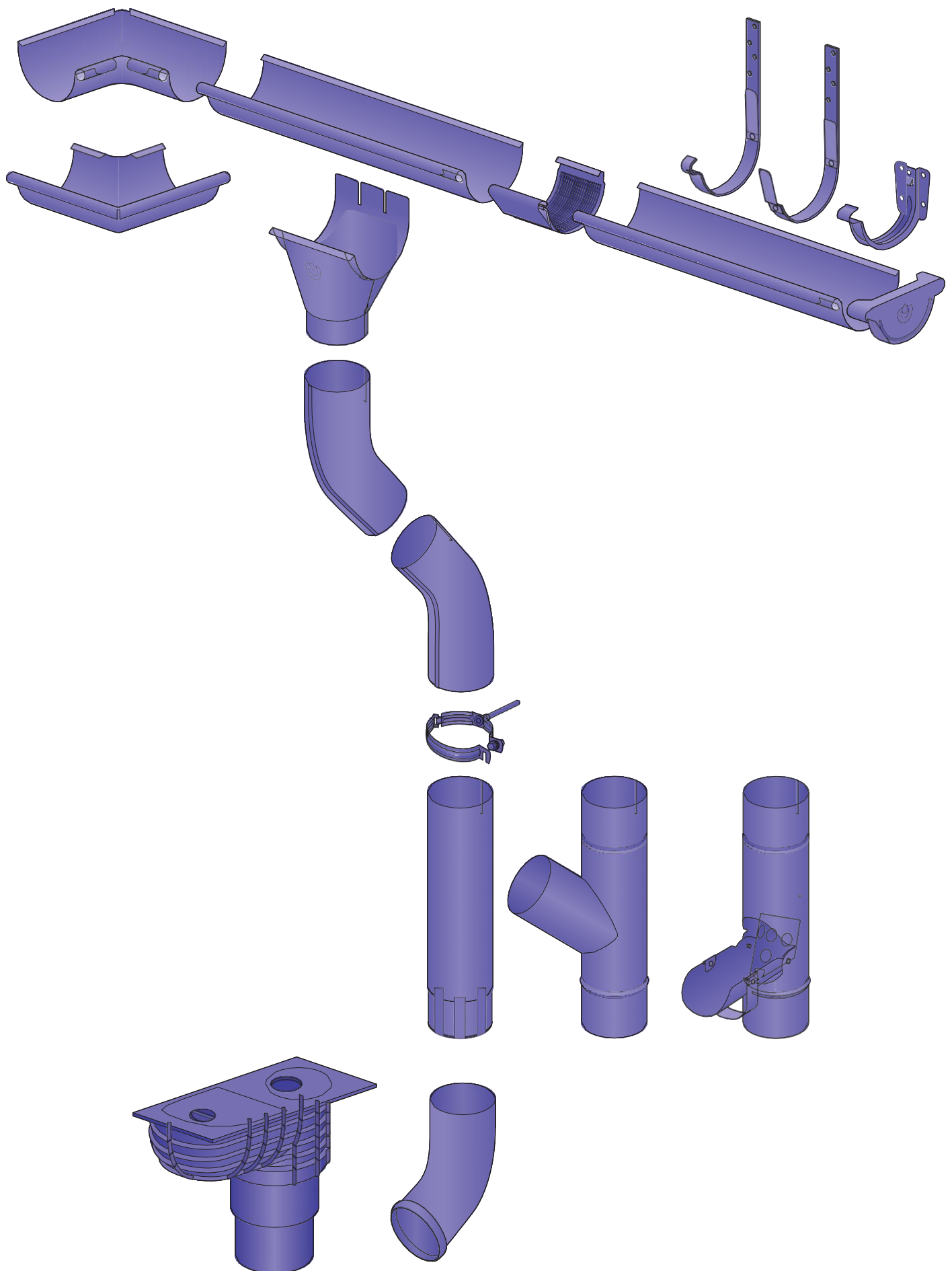


Rainwater collector

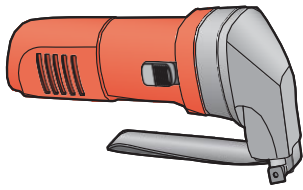


Settler / tank

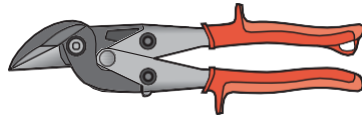
System components



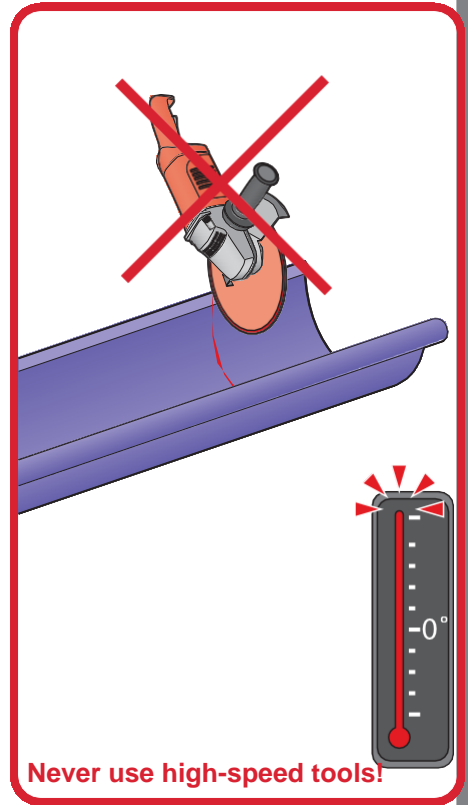
Assembly tools



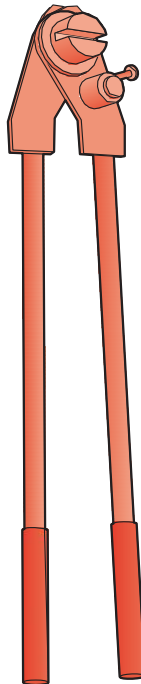
Nibbler



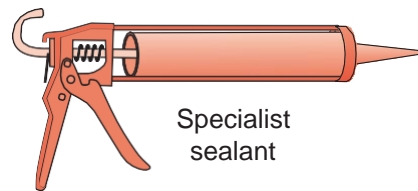
Steel shears



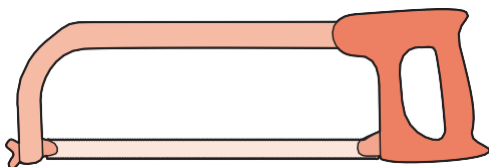
Screwdriver



Hook bender

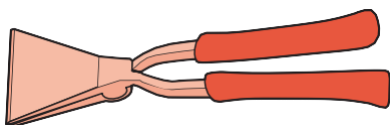
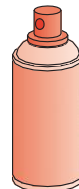


Specialist sealant

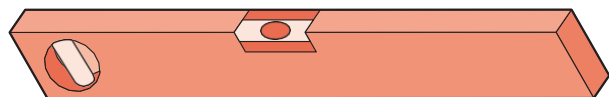


Hacksaw

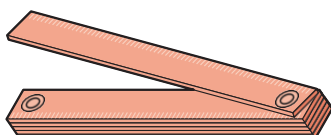
Spray for seals



Manual folding machine



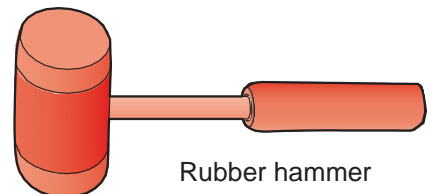
Spirit level



Measure



Pencil

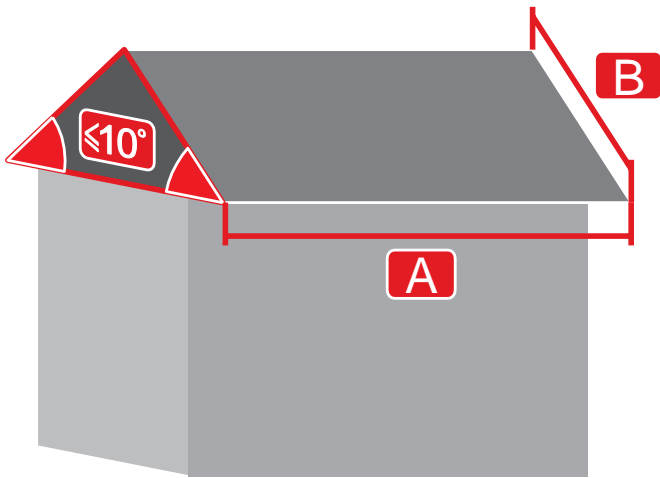


Rubber hammer

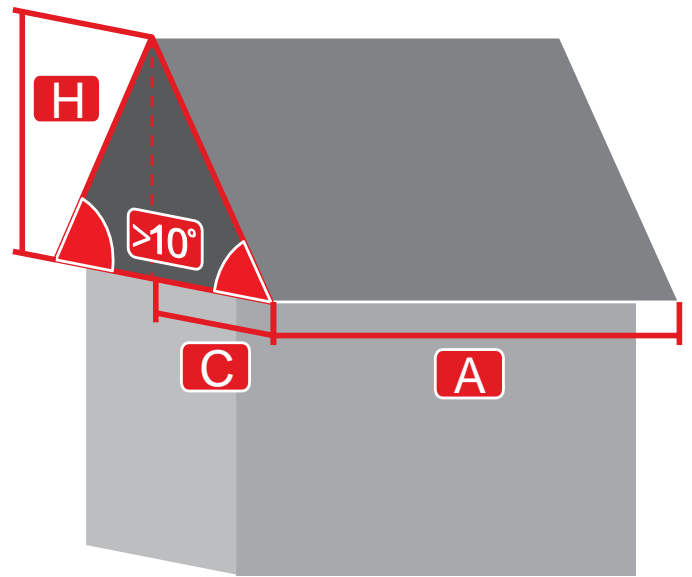
Only a nibbler or manual shears may be used to cut gutters or downspouts!

1

Roof measurement



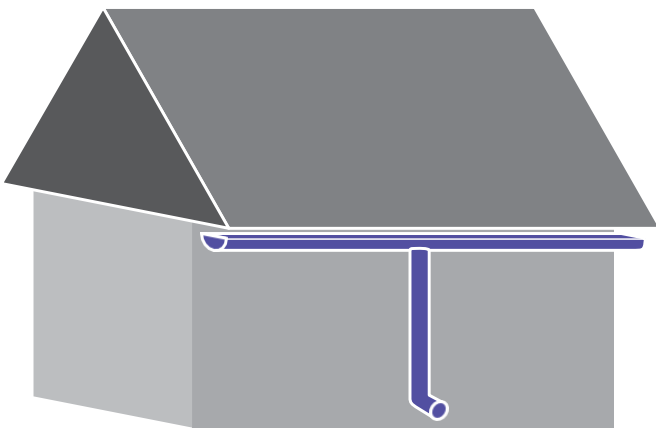
$$E_p = A \times B$$



$$E_p = (C + H/2) \times A$$

2

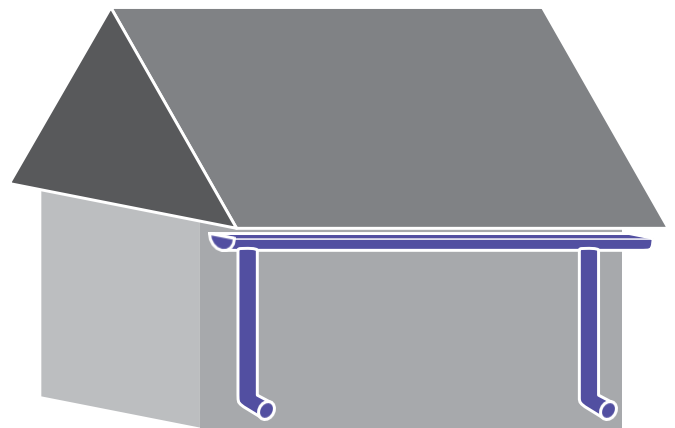
System selection



System 125/90 for $E_p \leq 100\text{m}^2$

System 130/90 for $E_p \leq 110\text{m}^2$

System 150/100 for $E_p \leq 200\text{m}^2$



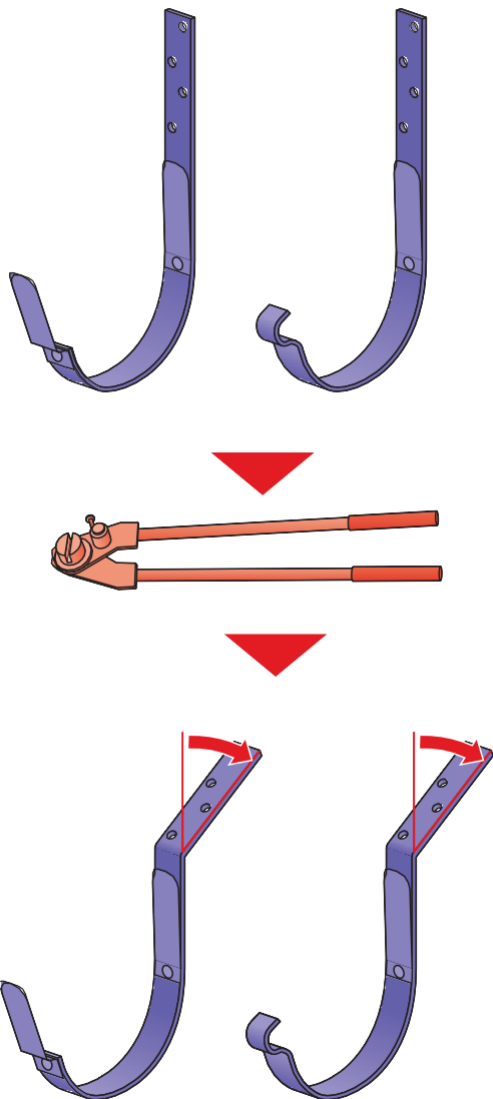
System 125/90 for $E_p \leq 200\text{m}^2$

System 130/90 for $E_p \leq 220\text{m}^2$

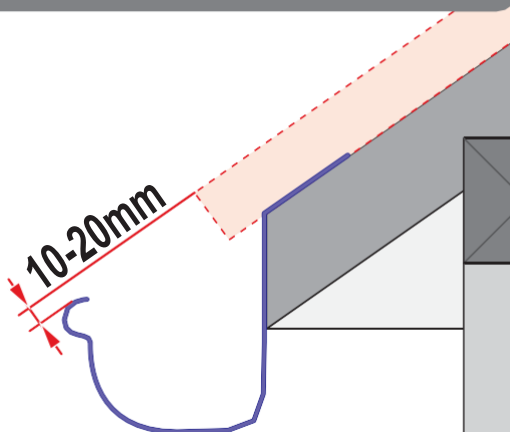
System 150/100 for $E_p \leq 300\text{m}^2$

3

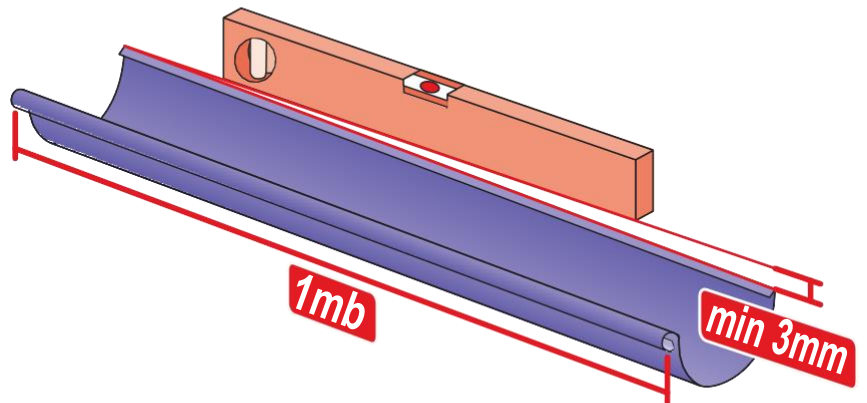
Hook machining



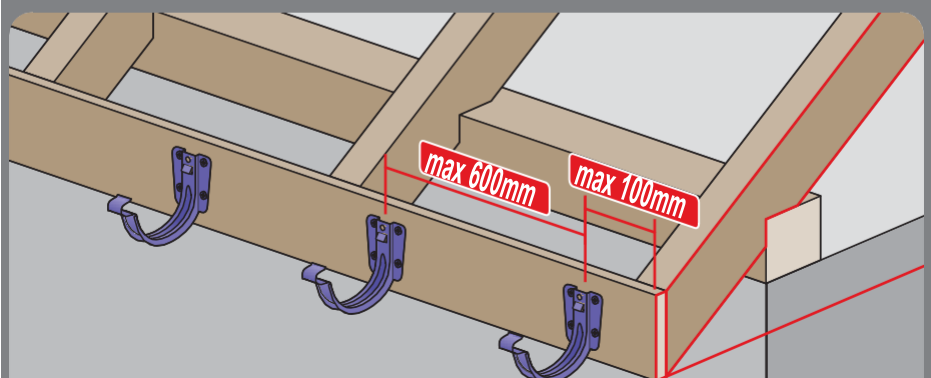
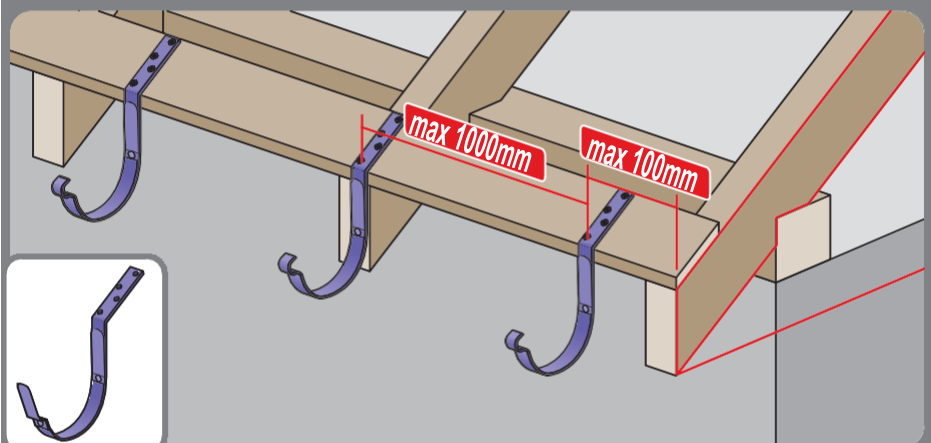
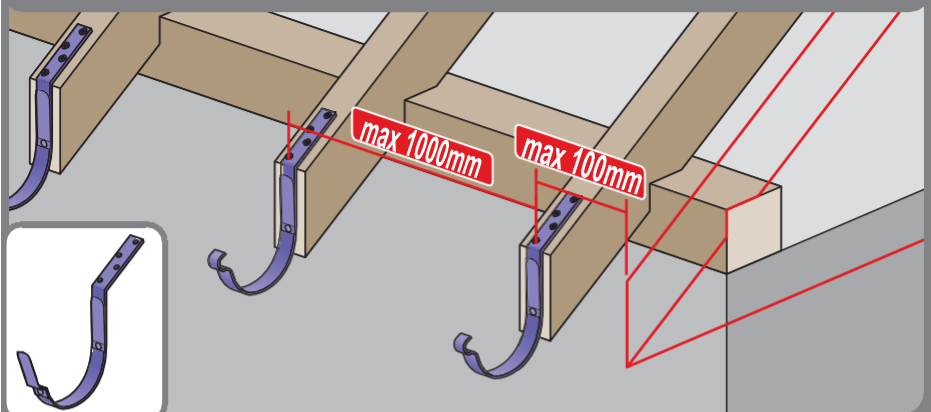
Hook installation at the highest point is recommended



Gutter inclination min 0.3%/1rmt

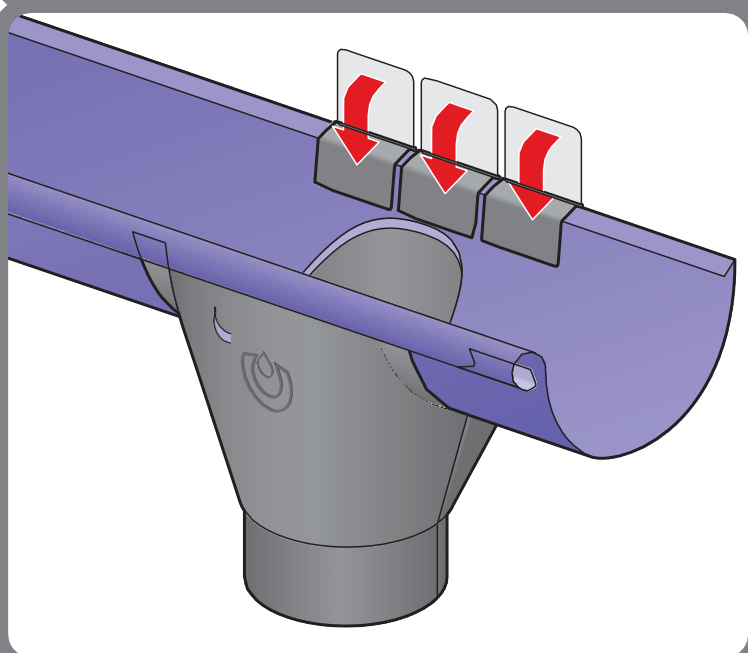
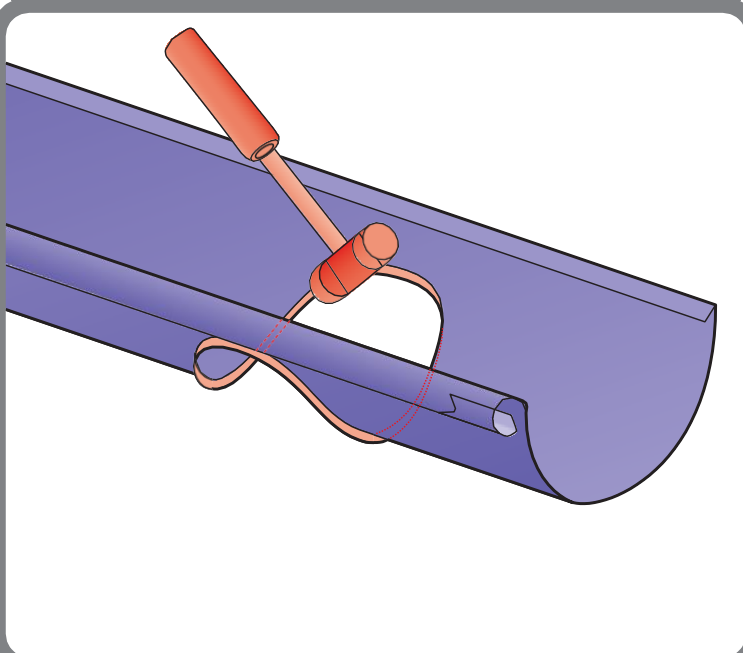
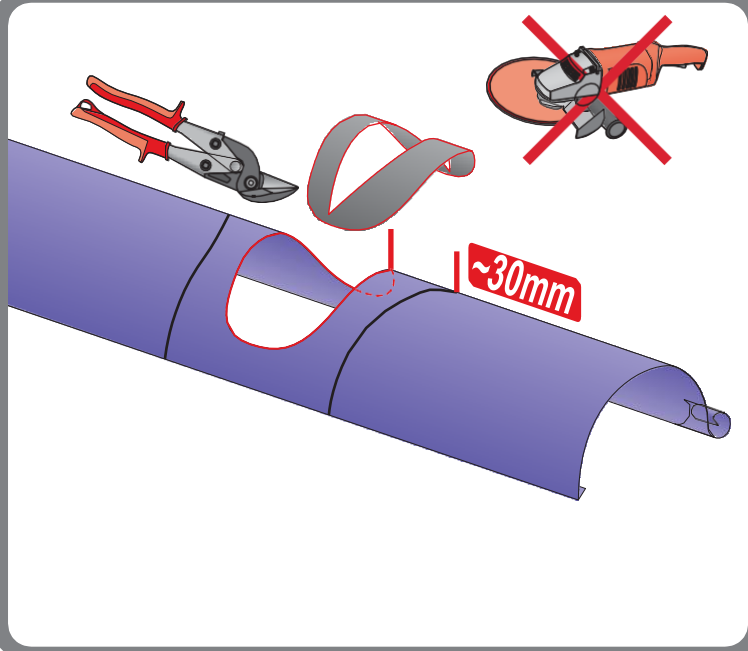
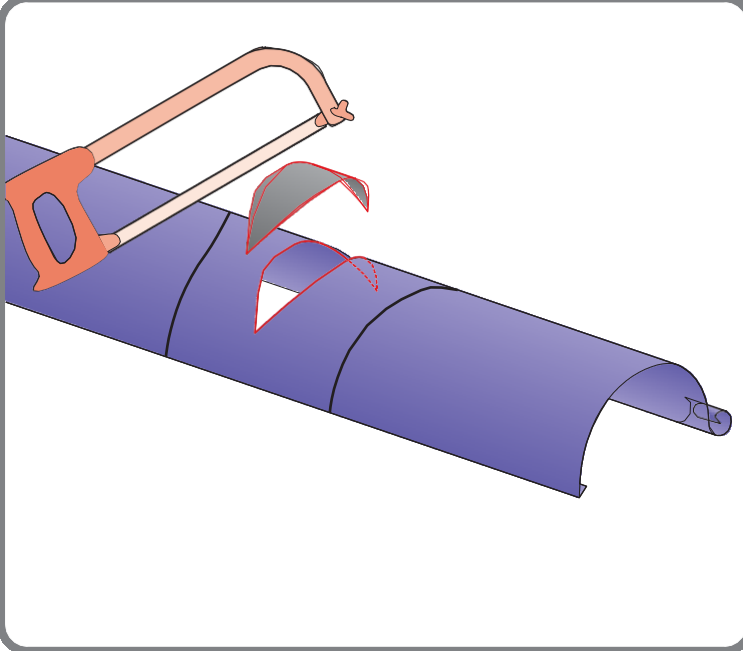
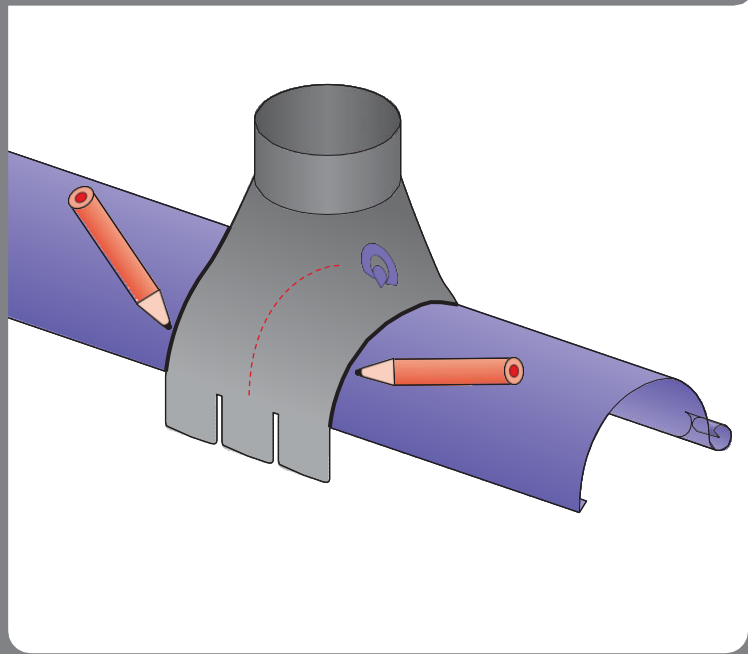
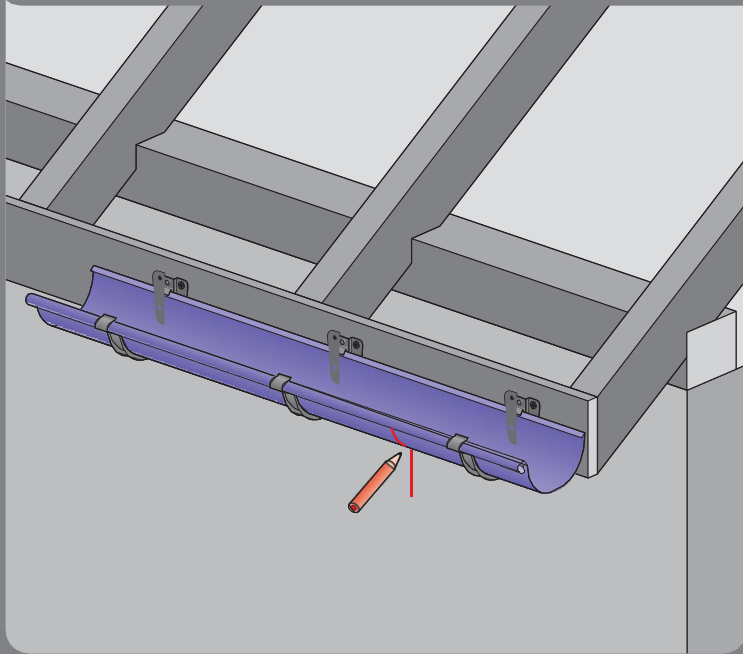


Hook spacing



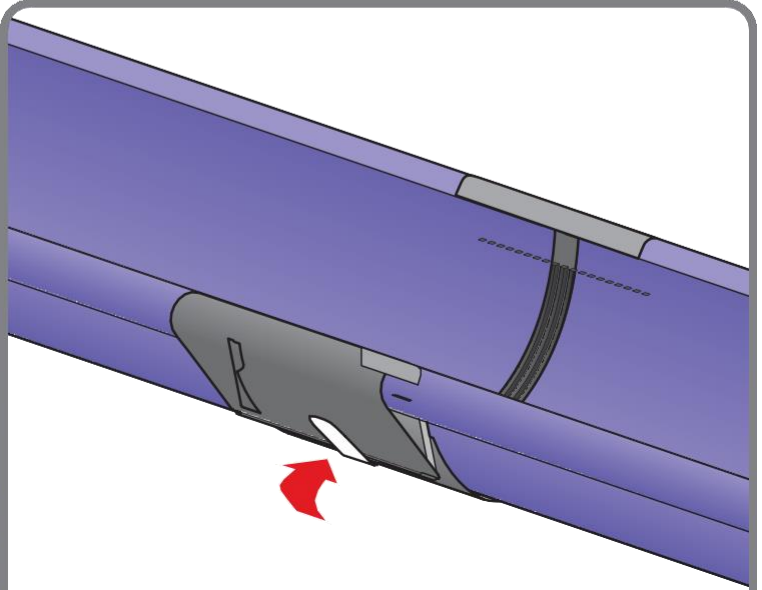
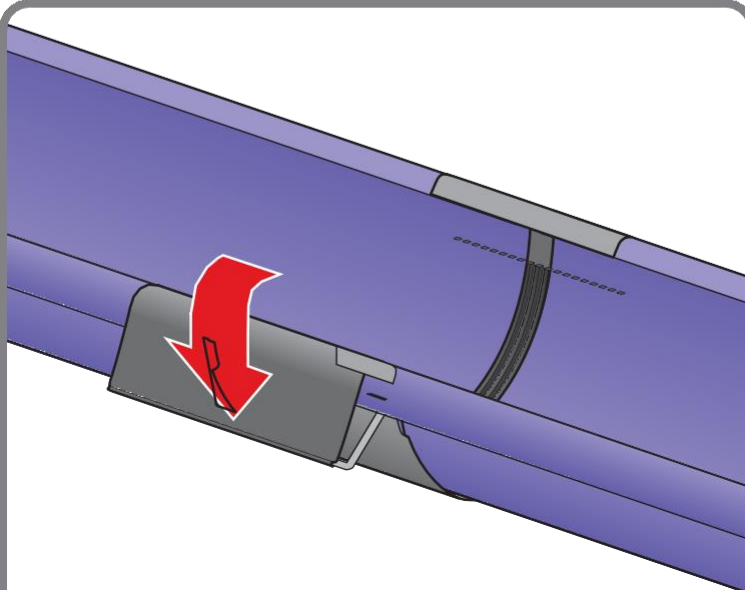
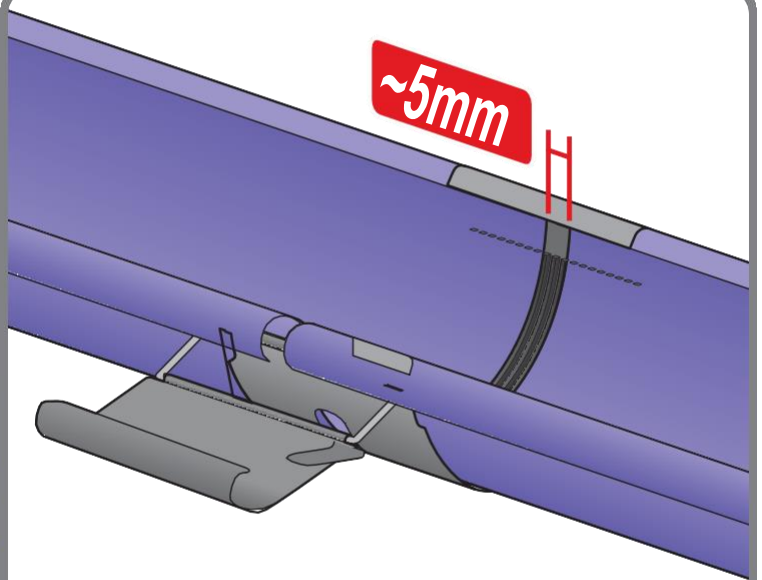
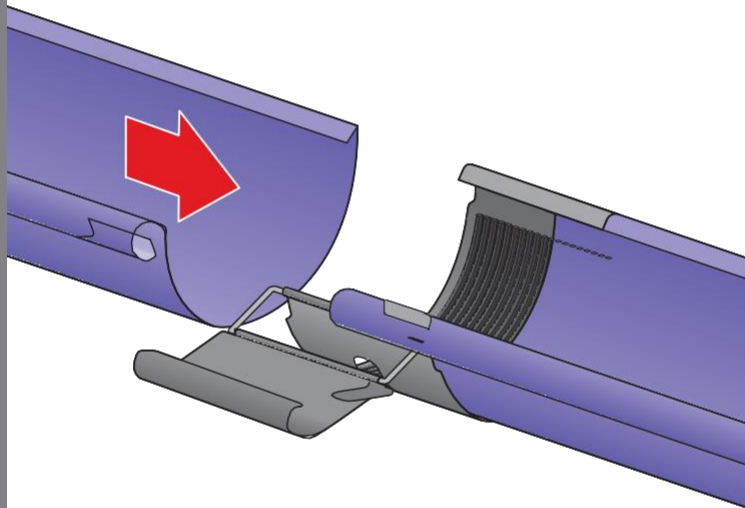
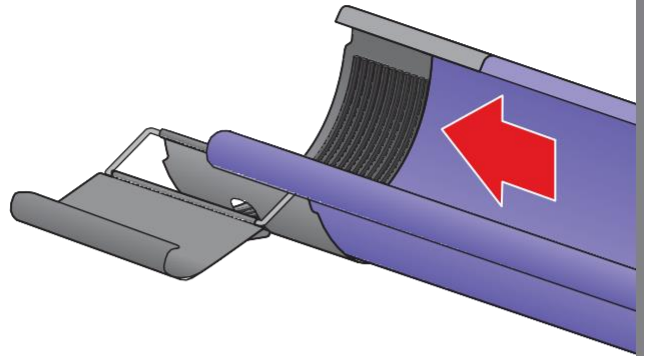
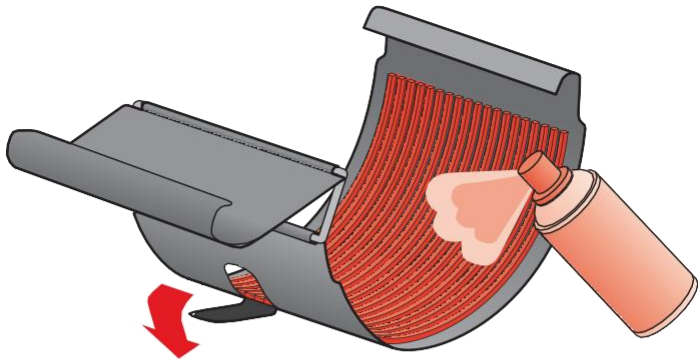
4

Gutter installation



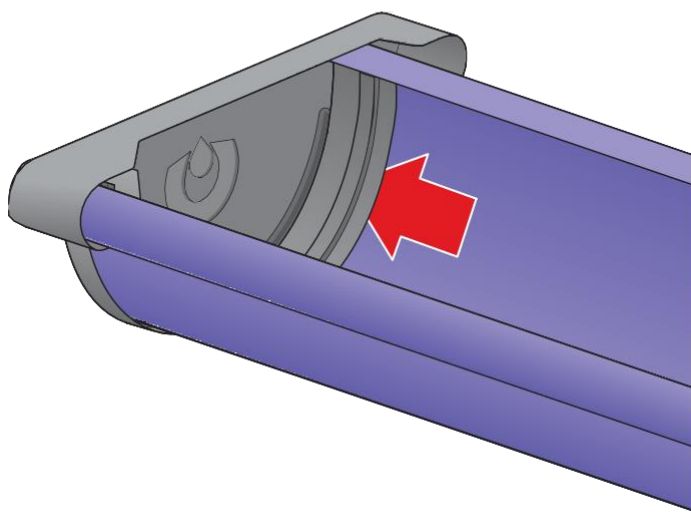
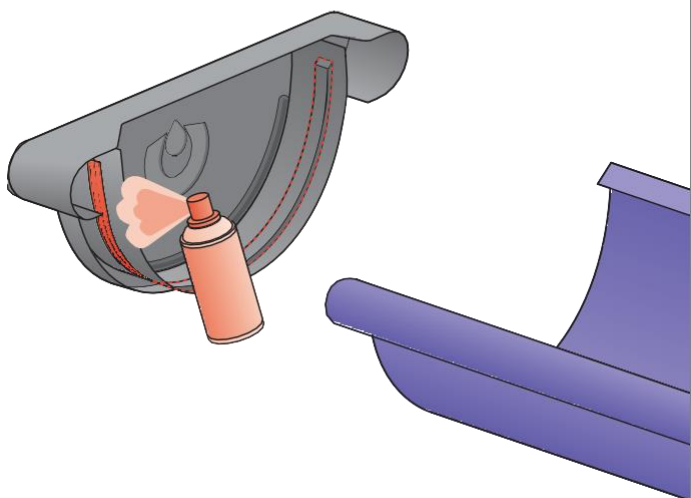
5

Nipple and clamp installation.



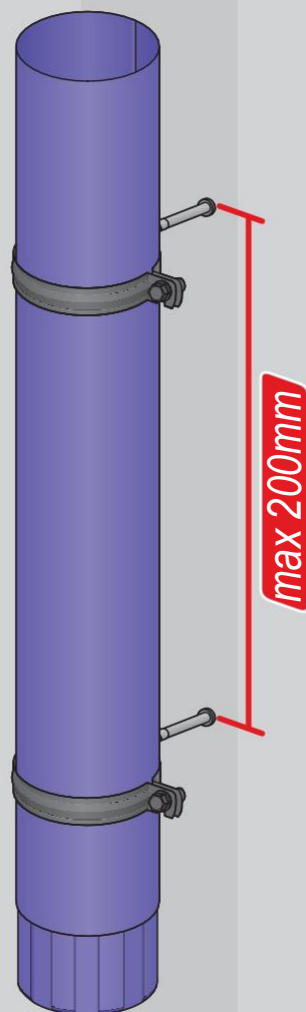
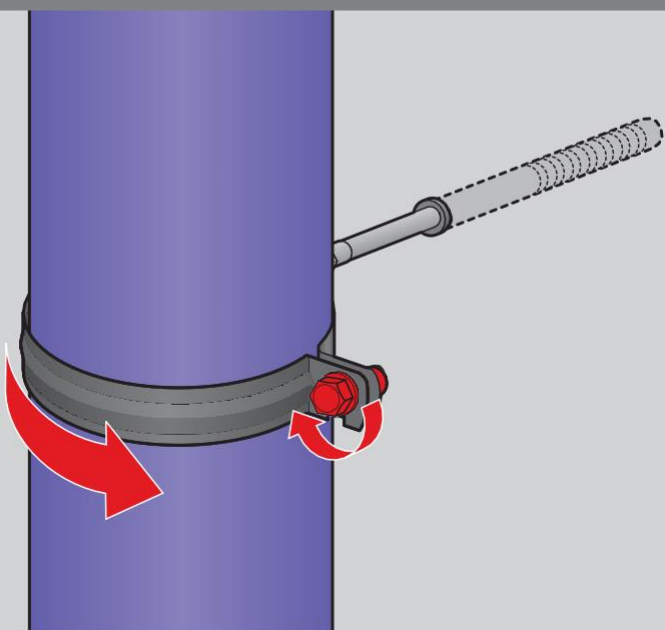
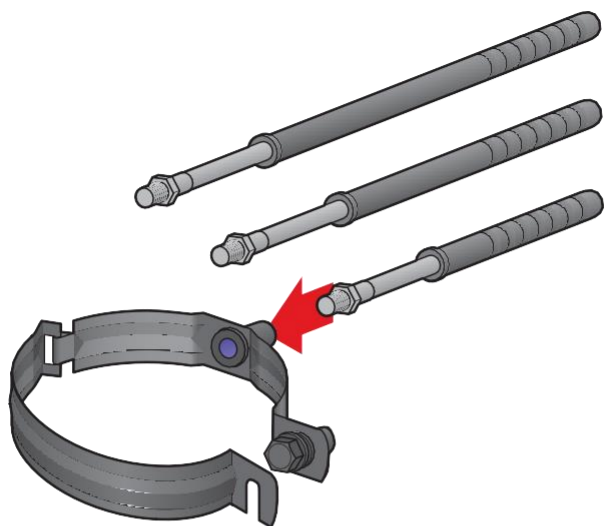
6

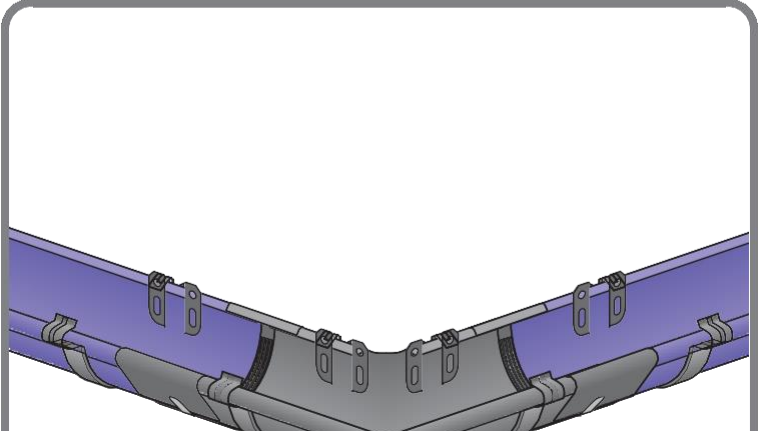
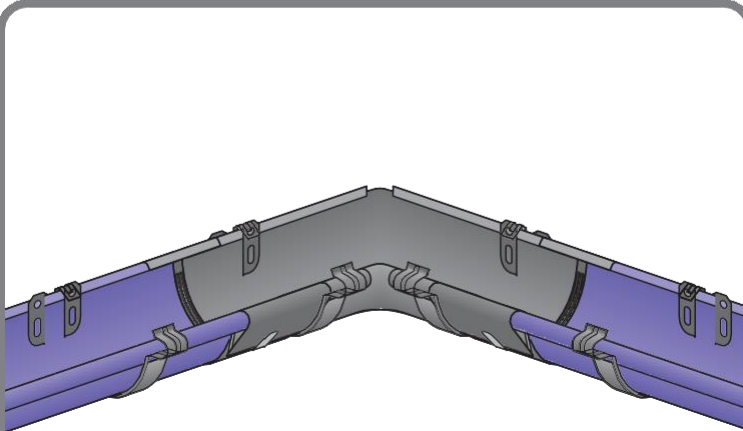
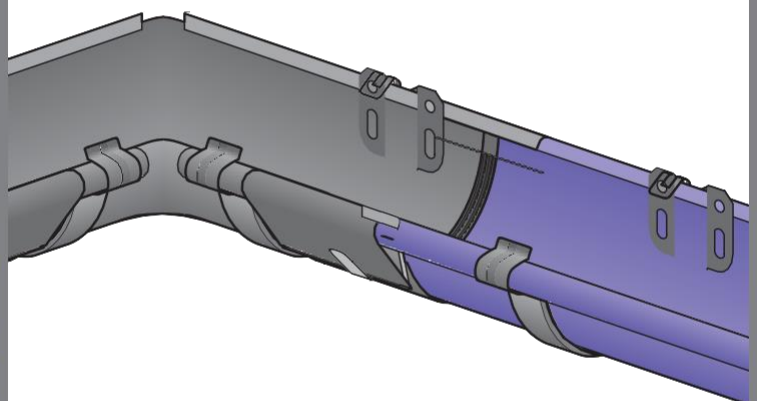
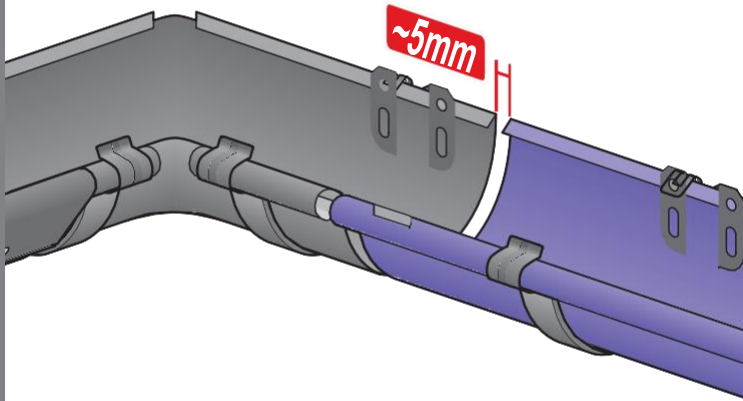
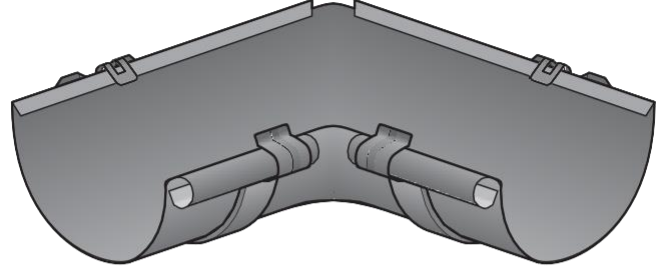
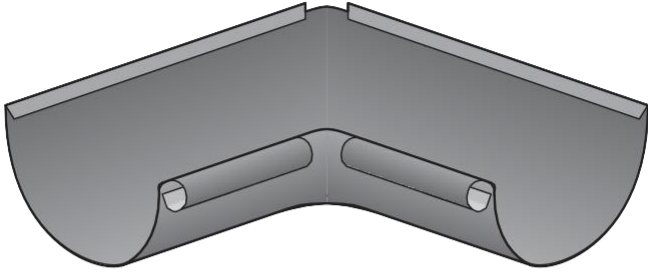
Bottom installation

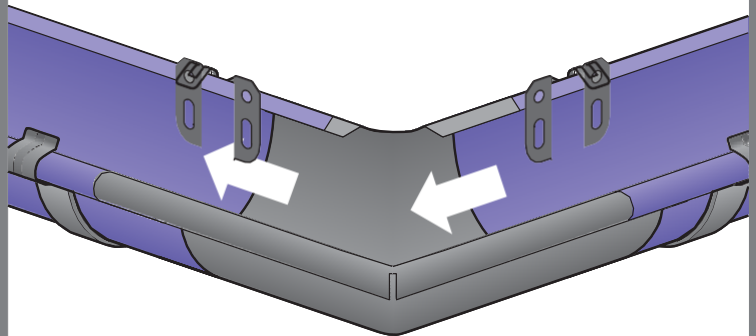
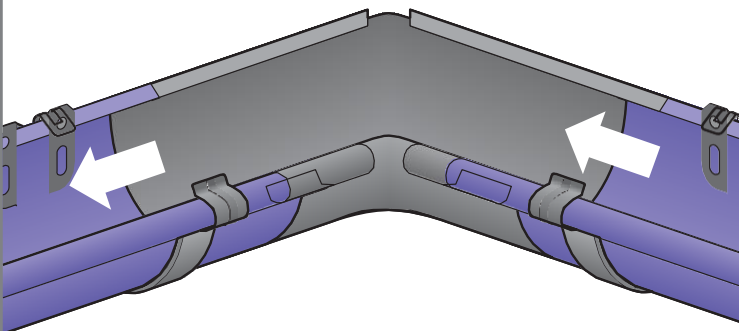
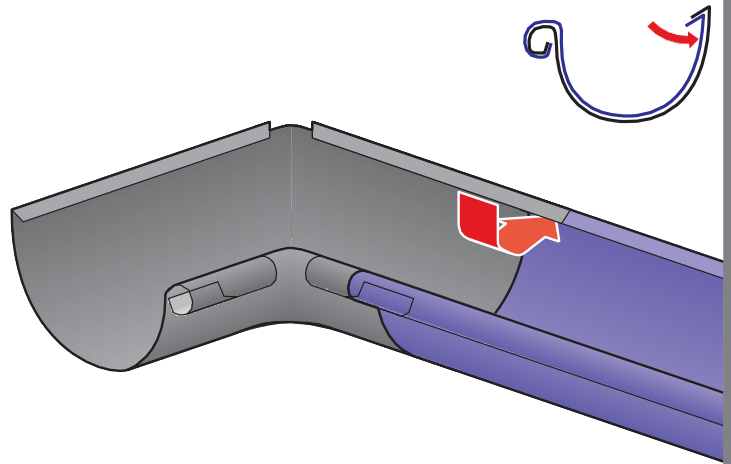
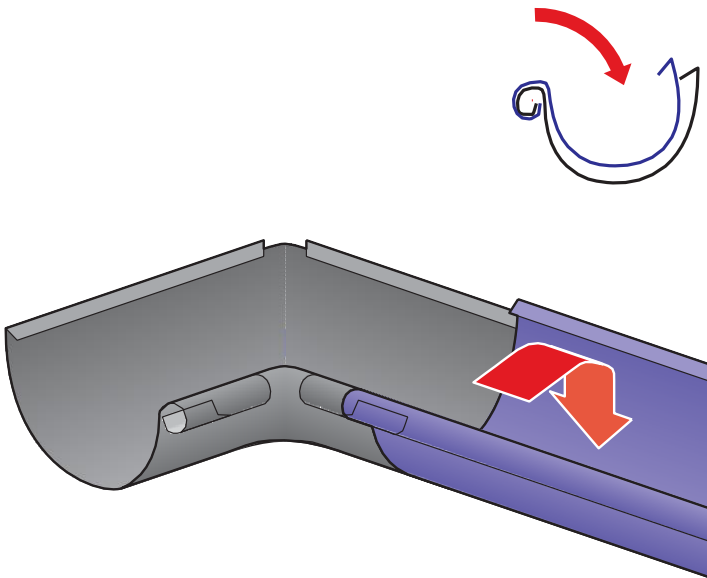
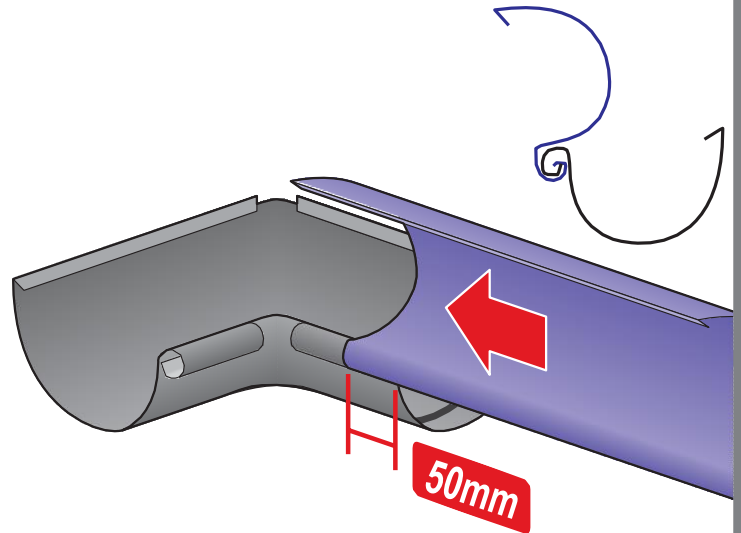
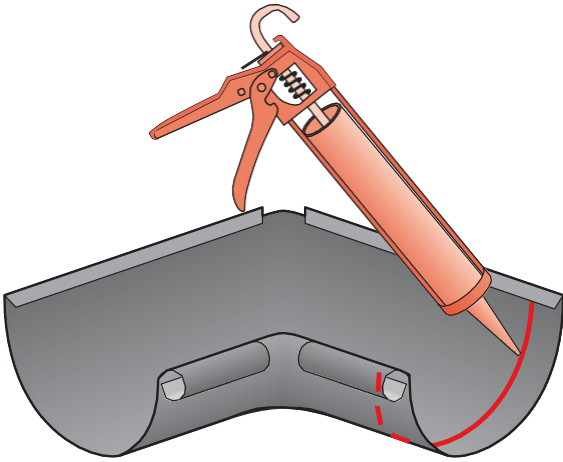


7

Clamp installation

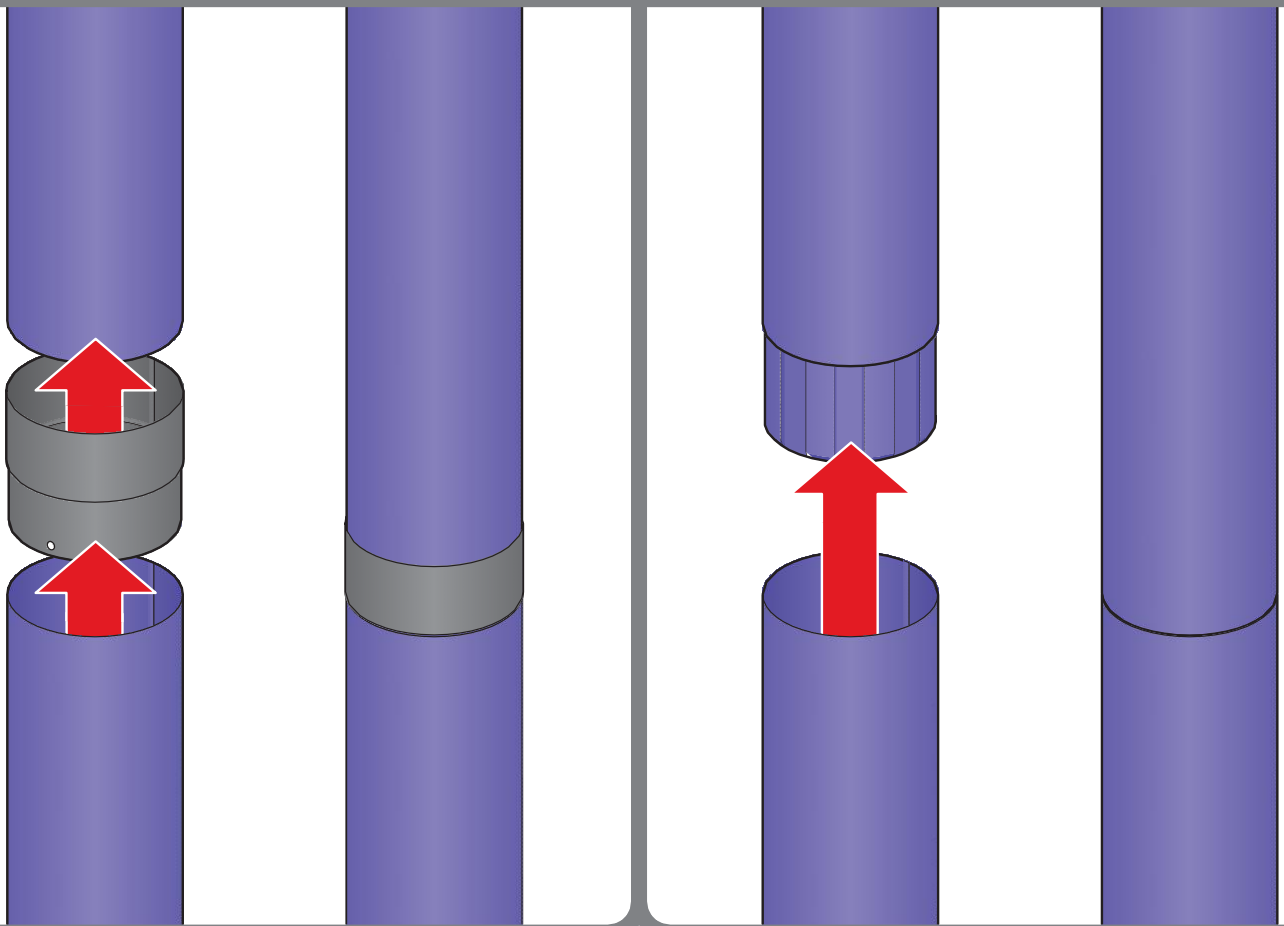






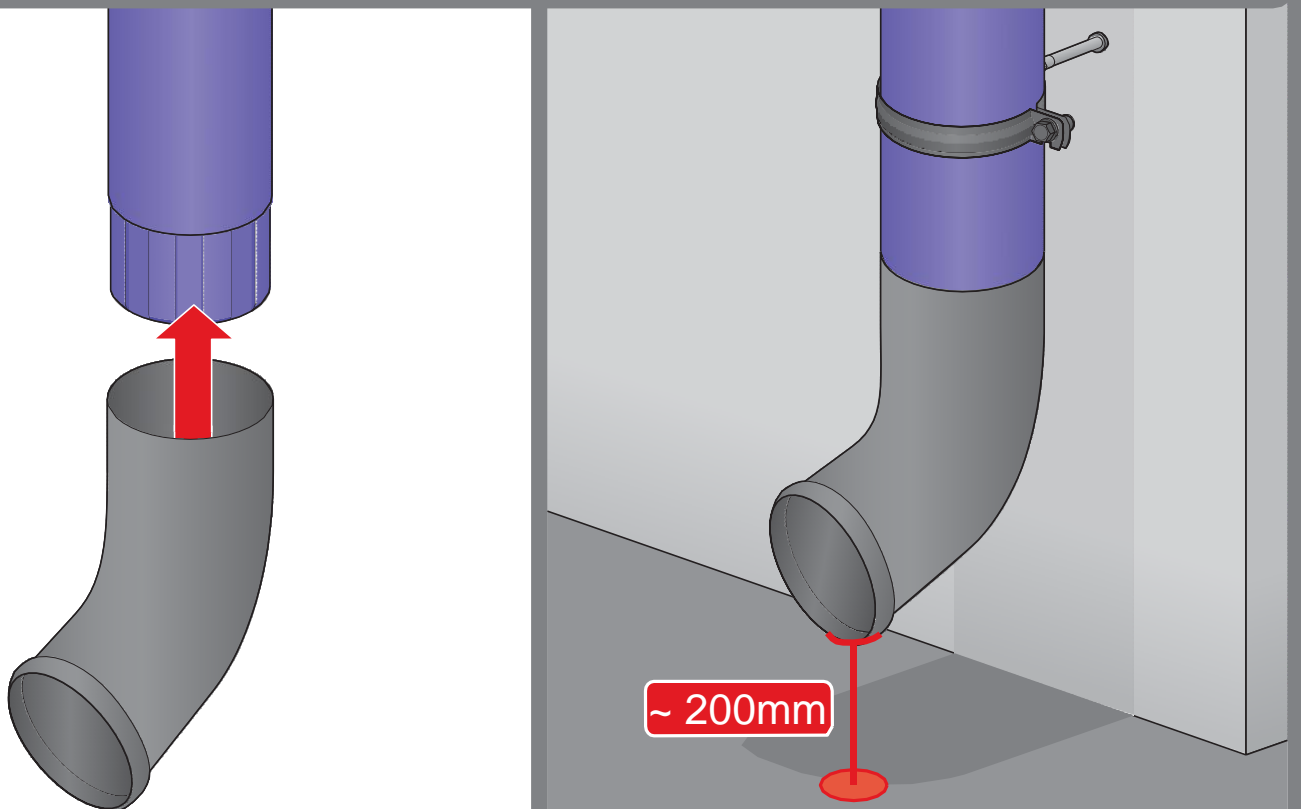
10

Pipe connection



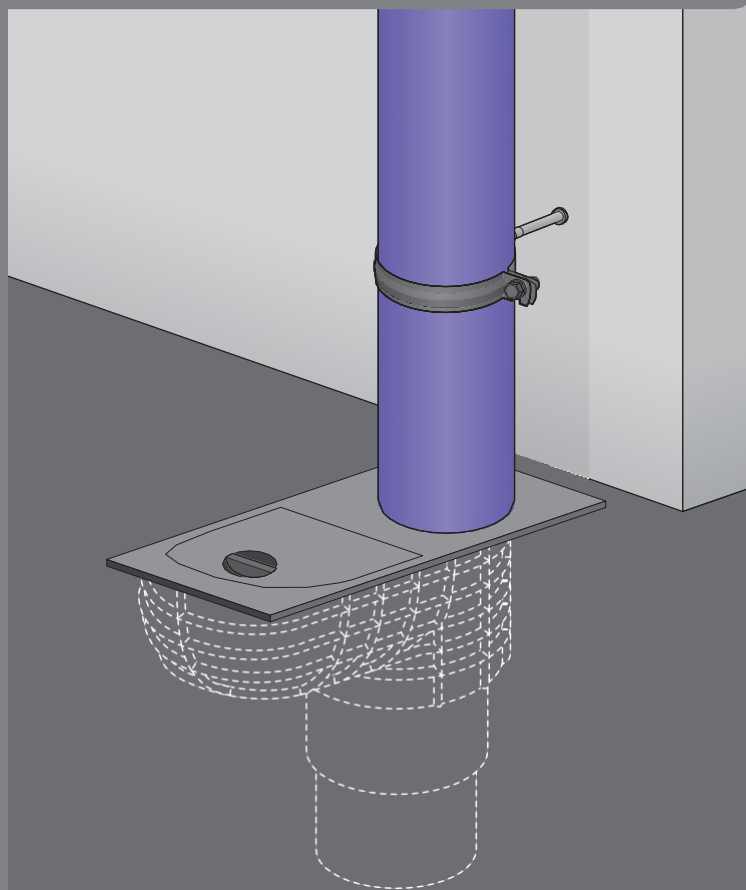
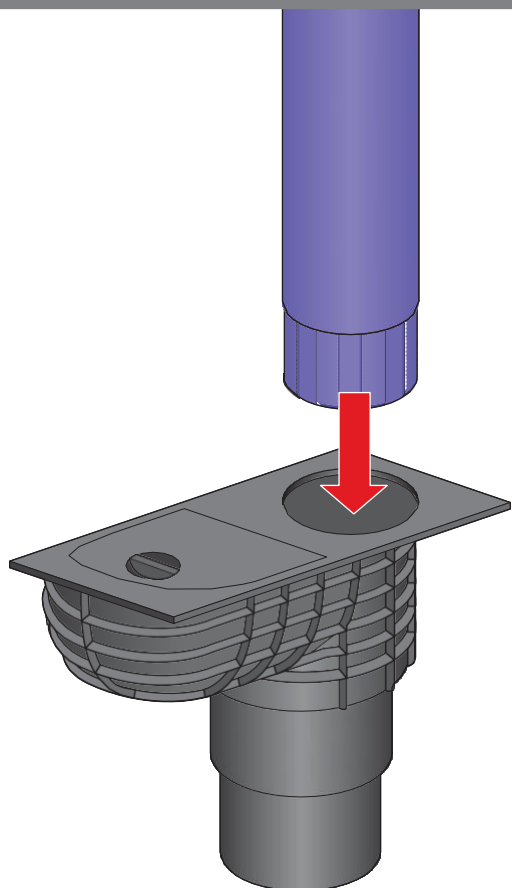
11

Screed installation



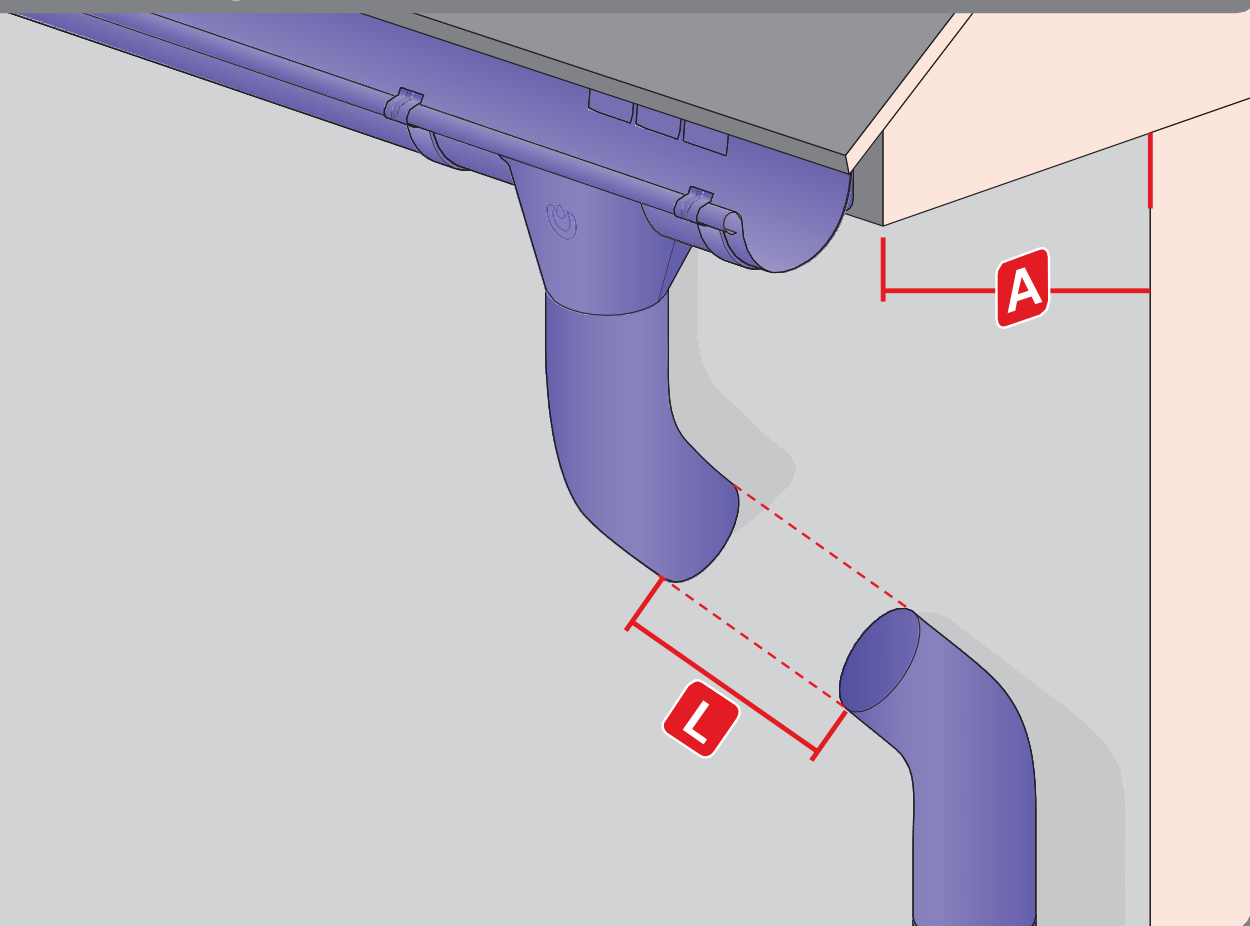
12

Settler installation



13

Cutting the pipe with the hood extended



**Blachotrapez Sp. z o.o.
ul. Kilińskiego 49a,
34-700 Rabka-Zdrój
PRODUCTION PLANT
Polanka 323,
32-400 Myślenice, Polska
www.kropsystem.pl**

0420

Installation requires expertise, specialist knowledge and experience. This manual is reference material and does not release contractors from the obligation to comply with the rules of the roofing practice and standards. The assembly methods presented in these instructions are intended as general guidelines. The required installation method may differ from that indicated in the instructions depending on the type of roof or regional solutions. Please follow the designer's guidelines or contact our technical support department for general assembly instructions and tips. Experienced contractors offer individual solutions that the BLACHOTRAPEZ Company accepts.